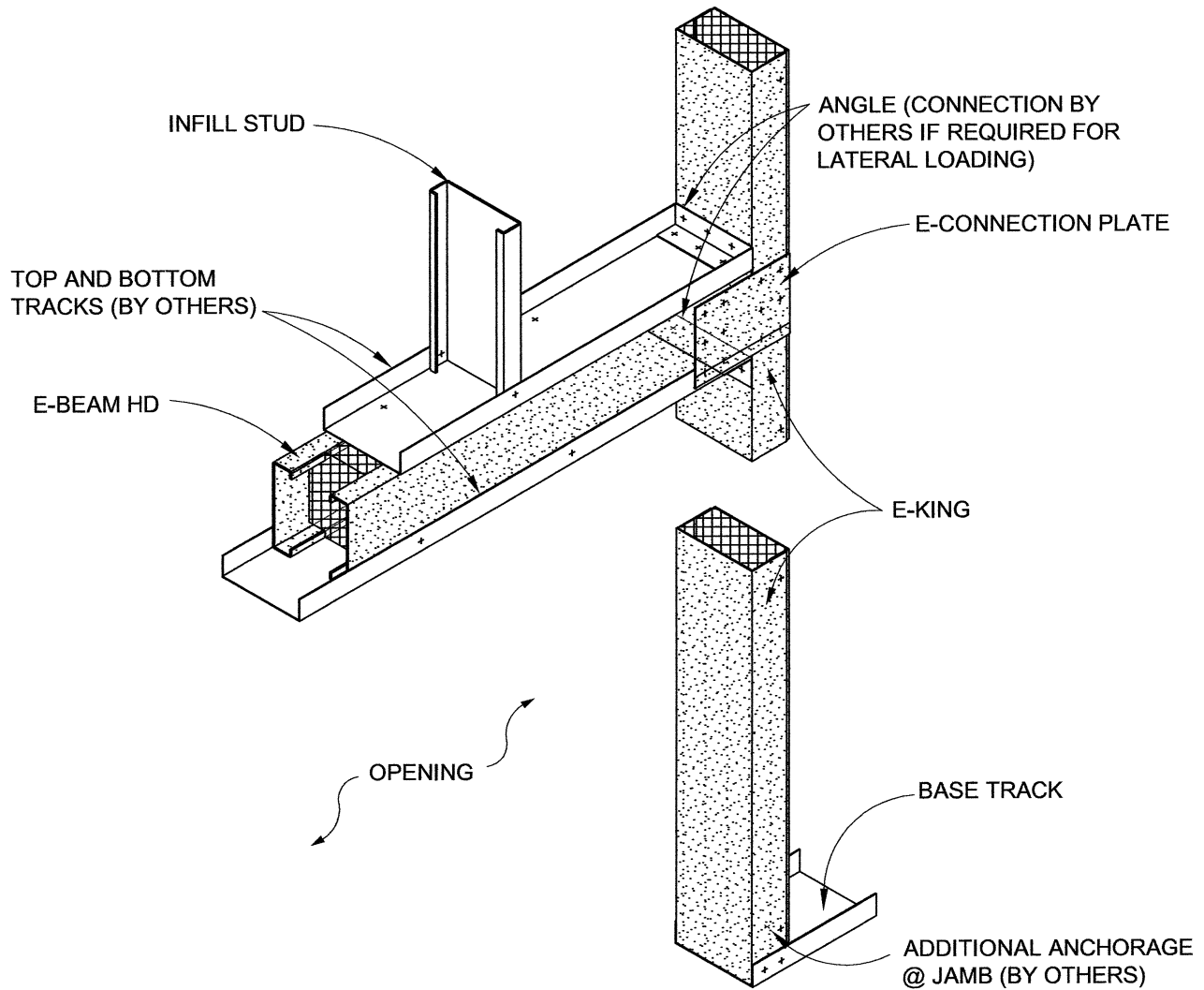


# E-KING RECOMMENDED INSTALLATION INSTRUCTIONS



## NOTE:

1. SIZE AND GAGE OF E-BEAM HD, E-KING, E-CONNECTION PLATE, AND OTHER CONNECTIONS SHALL BE DETERMINED BY THE DESIGNER BASED ON PROJECT REQUIREMENTS.
2. WHEN CUTTING E-KING TO SHORTER LENGTHS A FASTENER (SHEET METAL SCREW) MUST BE ADDED TO BOTH SIDES TO MAINTAIN A 3" SPACING OF FASTENERS FROM CUT ENDS.
3. AN EXCELLENT CUTTING BLADE FOR STEEL IS THE 'COLDCUT 1000' SERIES CERMET TIPPED BLADES BY CUT TECHNOLOGIES METAL. ASK YOUR ENVIRO PRODUCTS DISTRIBUTOR FOR DETAILS.